

[www.monitouch.com](http://www.monitouch.com)

Monitoring and Accessing On-site Data from Your Office

SOFT MONITOUCH

# TELLUS and V-Server

 **Hakko Electronics Co., Ltd.**  
[www.monitouch.com](http://www.monitouch.com)

Overseas Sales Section  
890-1 Kamikashiwano-machi,  
Hakusan, Ishikawa 924-0035, Japan

●Tel  
+81-76-274-2144

●Fax  
+81-76-274-5208

●E-mail  
[support@hakko-elec.co.jp](mailto:support@hakko-elec.co.jp)

●Distributor

\* Product specifications and design are subject to modification. \* Combined images are used for the screen images.  
\* Product colors may differ from colors in brochure photos due to printing. \* Windows and Excel are trademarks of  
Microsoft (USA) in the U.S. and other countries. \* Other company and product names in this brochure are registered  
trademarks. \* Printed with environmentally friendly ink free from petroleum solvent and VOC.





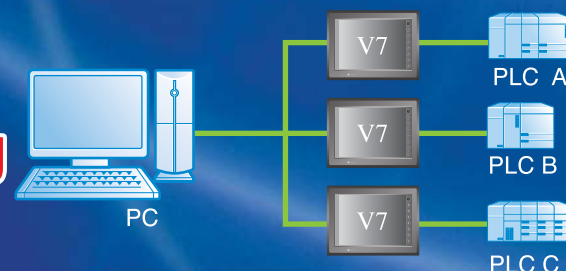
**Keep a Close Eye on Your Production Sites, Anywhere, Anytime!**

**TELLUS and V-Server enable you to monitor your production site and collect on-site data with your office PC via Monitouch V7 series.**

**Point 1**  
**Easy remote access and monitoring**

No additional programming required

Using Monitouch as a gateway, TELLUS with V-Server enables you to monitor your on-site data.

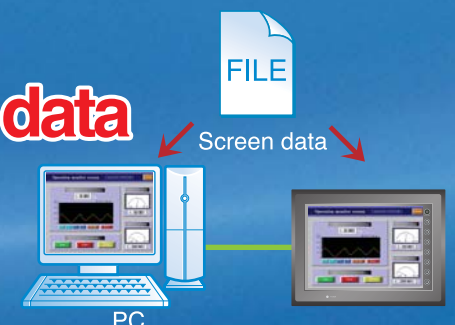


**Point 2**

Data sharing

**Sharing on-site Monitouch screen data**

On-site Monitouch screen data can be accessed and used for remote maintenance from your office PC.

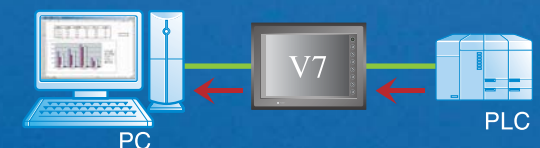


**Point 3**

Various functions

**Collecting real-time data**

V-server enables easy data collection and management of real-time on-site data.



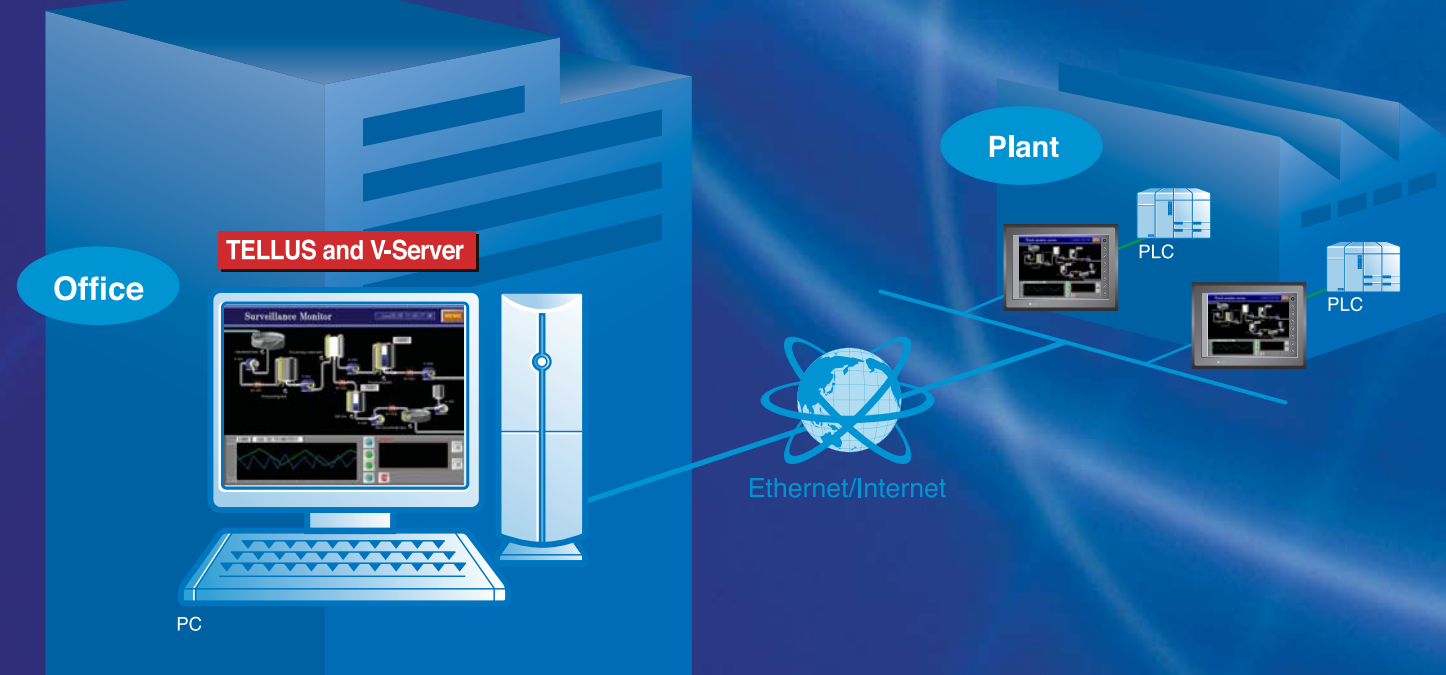


# TELLUS Remote Mode

SOFT MONITOUCH  
TELLUS and V-Server

The TELLUS and V-Server software package allows your PC to control and monitor on-site Monitouch via Ethernet.

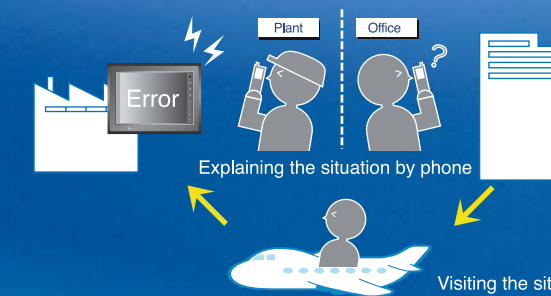
※ TELLUS Remote mode requires application software TELLUS and V-Server.



## Before

- Late recognition of problem occurrence
- No detailed information

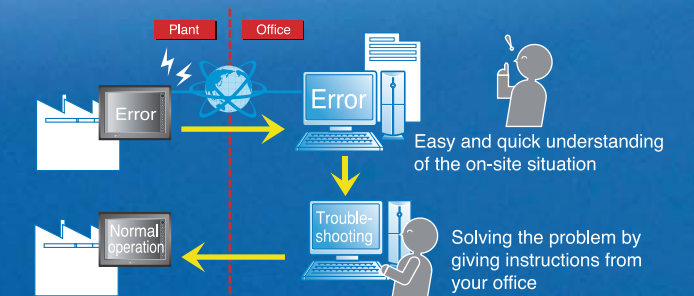
On-site checking required  
time and increased cost



## After

- Real-time monitoring from remote locations
- Solving problems without visiting the site

Quick recovery of production lines  
with no extra cost and no loss of time



**POINT 1 Outstanding cost-effectiveness**

Conventional remote maintenance systems needed installation and verification of a separate application software package for each unit, and took much time. TELLUS simplifies the configuration process and reduces the cost of constructing an effective remote maintenance system.

Conventional system required:	TELLUS:
SCADA	V series (+Ethernet unit)
Display creation and customization	+
Communication unit (PLC)	TELLUS and V-Server
High cost!	Simple and low cost!

**POINT 2 No need to edit another screen for remote maintenance**

On-site screen data file is also applied on your office PC. It is also possible to create new screen data for monitoring using V-SFT (configuration software).

**POINT 3 Controlling and monitoring of multiple units**

TELLUS enables you to control and monitor multiple Monitouch panels and PLCs, so that operation can be dramatically improved.

**POINT 4 Security functions to safeguard your system**

Security functions such as write-protect are provided to ensure safe and secure system operation.

**POINT 5 Synchronous and asynchronous operation modes**

In asynchronous operation mode, you can operate the display independently from the on-site Monitouch screen.

- Synchronous: PC → V7 → PC → V7
- Asynchronous: PC → V7 → PC → V7

**Various options for connection**

**LAN** (Centralized control by the control center)

This is the most common connection. Monitouch panels are connected to the control center of the production site via LAN.

Both TELLUS Remote and V-Server are needed.

**WAN** (Remote control from the head office)

Monitouch panels are connected to the remote head office through the control center of the production site via WAN.

Only TELLUS Remote is needed when V-Server is installed in the control center.

**Internet** (Access from remote location)

You can access the on-site screen via the Internet even from off-site.

Only TELLUS Remote is needed when V-Server is installed in the control center.

**Telephone Line**

Although communication costs are higher than that of a fast Internet connection, system configuration is easy.

Both V-Server and TELLUS Remote are needed.



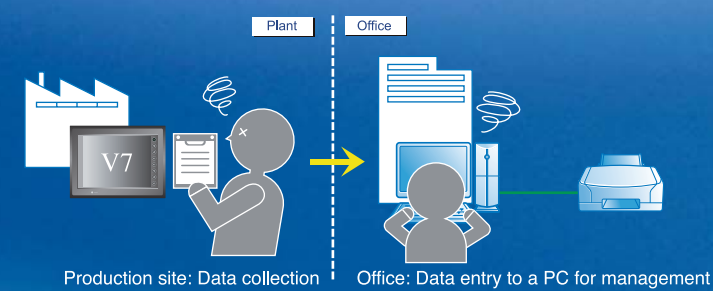
Accesses to PLCs from your PC via Monitouch through Ethernet to collect real-time data without additional programming. Recipe management and e-mail alerts upon alarm occurrence are possible.



## Before

- Required to go to production sites to acquire daily production data

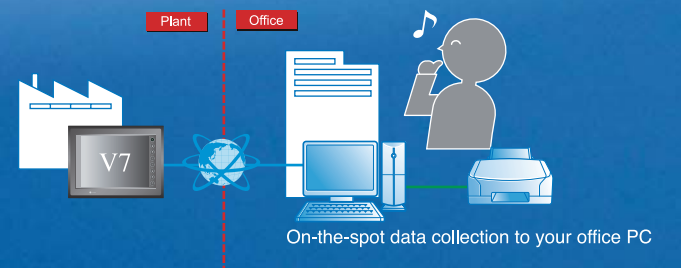
Frequent visits take time and increase the cost



## After

- Real-time production data can be transferred to your office PC.

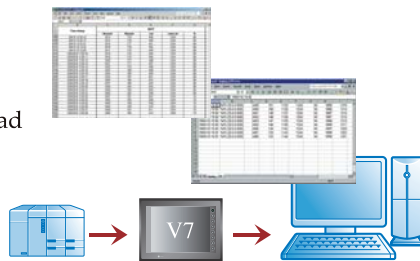
Highly efficient data management by V-Server



### POINT 1 Data collection

#### Data logging function

Production data of PLCs, temperature controllers and Monitouch can be regularly read out and saved in Excel/CSV files or database.



#### Readout of sampling data

Sampling, alarm display and bit sampling data stored in Monitouch can be read out and saved in Excel/CSV files or database.

Time	Value	Unit	Alarm
10:00:00	10.00	°C	Normal
10:01:00	10.05	°C	Normal
10:02:00	10.10	°C	Normal
10:03:00	10.15	°C	Normal
10:04:00	10.20	°C	Normal
10:05:00	10.25	°C	Normal
10:06:00	10.30	°C	Normal
10:07:00	10.35	°C	Normal
10:08:00	10.40	°C	Normal
10:09:00	10.45	°C	Normal
10:10:00	10.50	°C	Normal
10:11:00	10.55	°C	Normal
10:12:00	10.60	°C	Normal
10:13:00	10.65	°C	Normal
10:14:00	10.70	°C	Normal
10:15:00	10.75	°C	Normal
10:16:00	10.80	°C	Normal
10:17:00	10.85	°C	Normal
10:18:00	10.90	°C	Normal
10:19:00	10.95	°C	Normal
10:20:00	11.00	°C	Normal

### POINT 2 Data management

#### Recipe data transfer

Transferring data to PLC  
Production data prepared in Excel files, CSV files or other database can be transferred to PLCs, temperature controllers, and Monitouch.

#### Readout from PLC data

Production data in PLCs, temperature controllers, and Monitouch can be read out and saved in Excel files, CSV files or other database.

Recipe No.	Recipe Name	Recipe Data
1	Recipe 1	10.00
2	Recipe 2	10.05
3	Recipe 3	10.10
4	Recipe 4	10.15
5	Recipe 5	10.20
6	Recipe 6	10.25
7	Recipe 7	10.30
8	Recipe 8	10.35
9	Recipe 9	10.40
10	Recipe 10	10.45
11	Recipe 11	10.50
12	Recipe 12	10.55
13	Recipe 13	10.60
14	Recipe 14	10.65
15	Recipe 15	10.70
16	Recipe 16	10.75
17	Recipe 17	10.80
18	Recipe 18	10.85
19	Recipe 19	10.90
20	Recipe 20	10.95

※ It is possible to collect and manage data anytime by setting up an "Event" (see next page) for triggering.

### POINT 3 Monitoring

#### Alarm monitor

Alarm data can be monitored to display the situation, history or list of occurring alarms in V-Server. In addition, an e-mail alert can be sent immediately when a critical alarm occurs.

List of occurring alarms

Alarm No.	Alarm Name	Alarm Time	Alarm Status
1	Alarm 1	10:00:00	Active
2	Alarm 2	10:01:00	Active
3	Alarm 3	10:02:00	Active
4	Alarm 4	10:03:00	Active
5	Alarm 5	10:04:00	Active
6	Alarm 6	10:05:00	Active
7	Alarm 7	10:06:00	Active
8	Alarm 8	10:07:00	Active
9	Alarm 9	10:08:00	Active
10	Alarm 10	10:09:00	Active
11	Alarm 11	10:10:00	Active
12	Alarm 12	10:11:00	Active
13	Alarm 13	10:12:00	Active
14	Alarm 14	10:13:00	Active
15	Alarm 15	10:14:00	Active
16	Alarm 16	10:15:00	Active
17	Alarm 17	10:16:00	Active
18	Alarm 18	10:17:00	Active
19	Alarm 19	10:18:00	Active
20	Alarm 20	10:19:00	Active

Alarm history



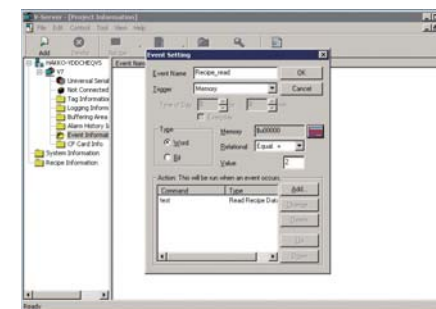
#### DDE function

The tag data registered in V-Server can be pasted to Excel files in DDE format. That enables easy monitoring of the data with other compatible application software.

### POINT 4 Event action

A prompt action can be taken when an event occurs by setting "Event" beforehand.

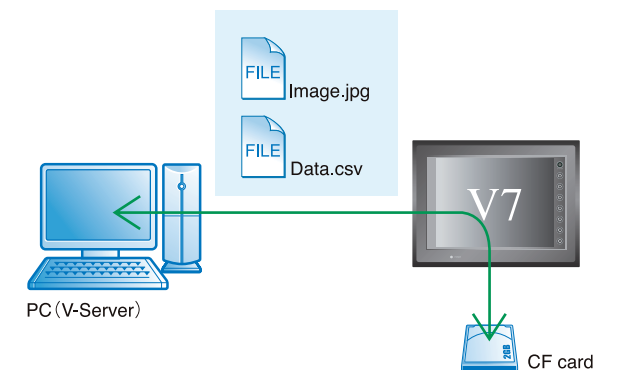
- Event
  - Bit ON/OFF
  - Comparison of memory values
  - Time setting



- Action
  - Transfer of recipe data (read/write)
  - Start/Stop of logging
  - Application start
  - Sampling readout

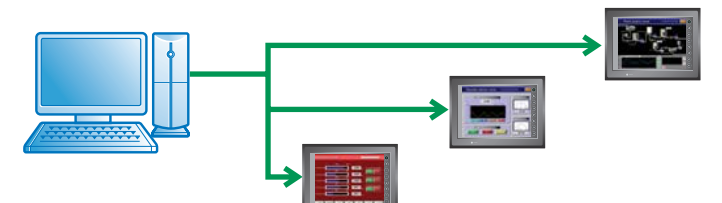
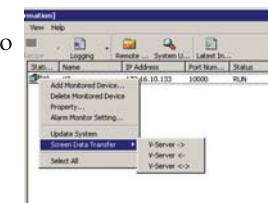
### POINT 5 Readout/writing to/from CF card

Data stored in CF card inserted in Monitouch can be read out. Data edited on PC can be written onto CF card via Ethernet.



### POINT 6 Transmission of screen data

You can transfer screen data to multiple Monitouch panels.

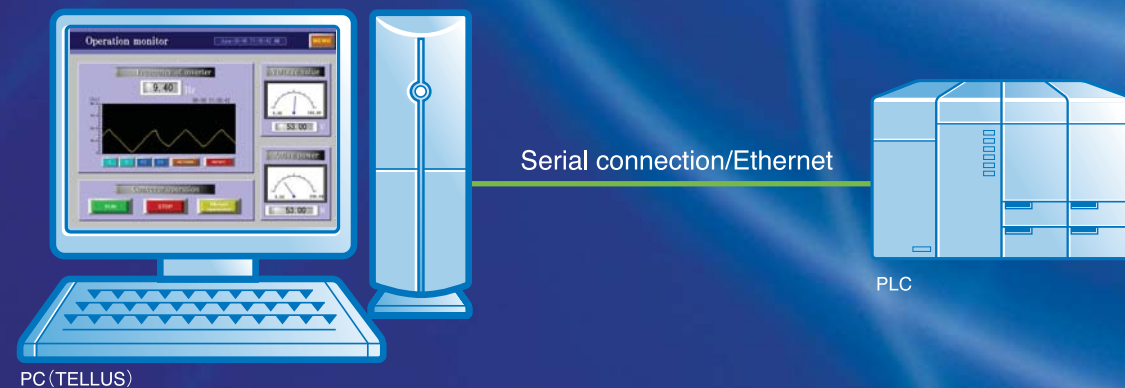




# TELLUS HMI Mode

SOFT MONITOUCH  
TELLUS and V-Server

Managing on-site PLC data from your PC via direct serial connection or Ethernet. This means you can now use PC peripheral equipment and Windows application software.



## Before

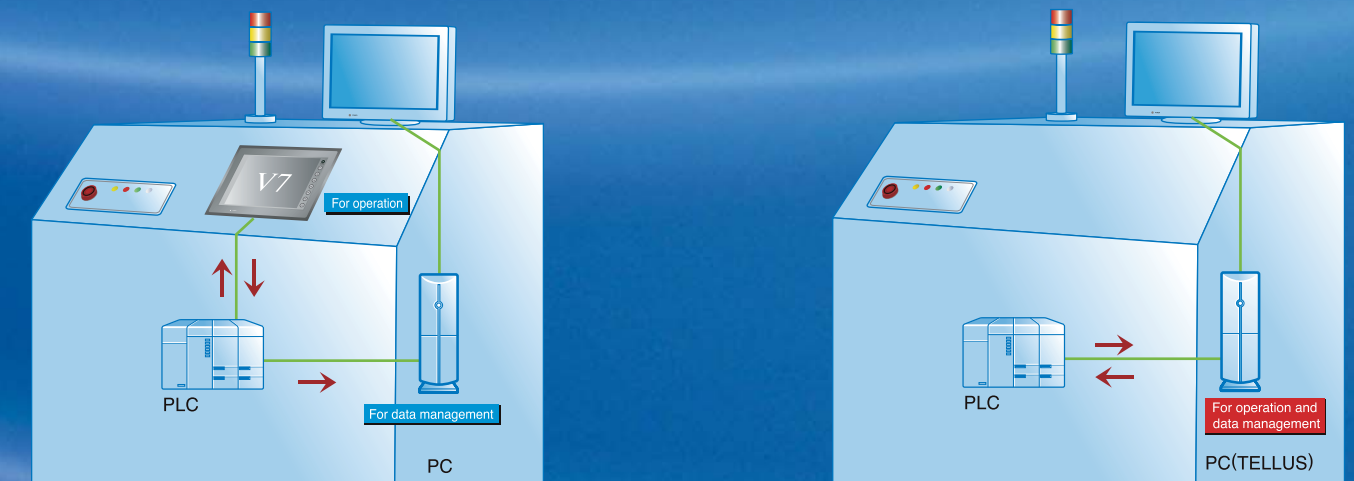
- In order to manage a large volume of data with complicated calculations, both Monitouch and PC were required.

Costly due to the use of both Monitouch and PC

## After

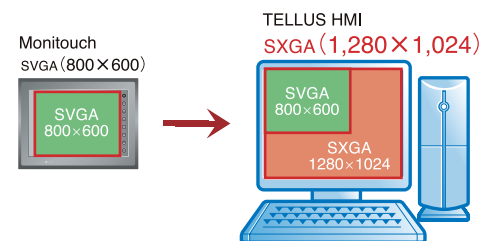
- Operation control and data management are integrated into one PC.

Simple configuration reduces cost



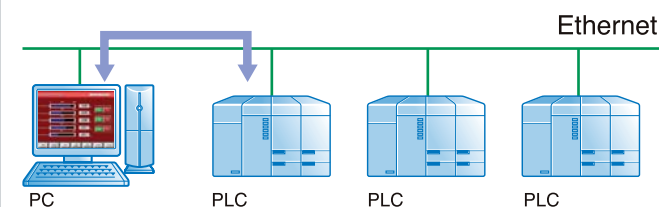
### POINT 1 SXGA (1,280×1,024 pixels) display is supported

TELLUS HMI supports SXGA display on PC screens. This is especially effective for detailed monitoring of the entire system in the plant such as a process line or floor line.



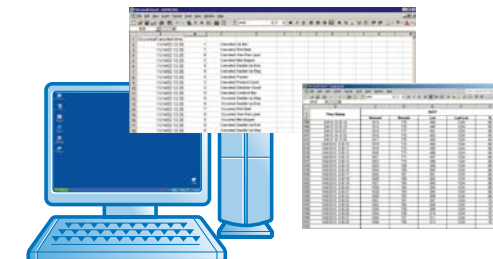
### POINT 2 Ethernet connection

Multiple PLCs can be connected to one PC via Ethernet without a dedicated program.



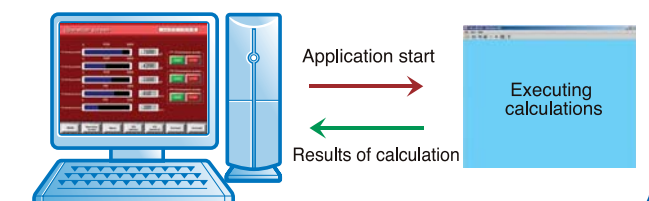
### POINT 4 PC application software is operative

Use of Windows application software and DLL functions are possible on TELLUS, as well as starting/shutting down Windows OS.



### POINT 5 TELLUS access function for complicated calculations

With TELLUS DLL file provided with the software, an external application can be written to access the data, execute any functions and return the data.



### POINT 3 Connection with temperature controllers

By using multiple communication ports, a PC can connect to temperature controllers without programming while connecting to a PLC, thus enabling easy monitoring, entry, sampling and batch setting of the temperature controllers' memory.

#### Sampling

- Sampling of current values and error conditions is available on PC.



#### Monitoring and setting of temperature controller memory

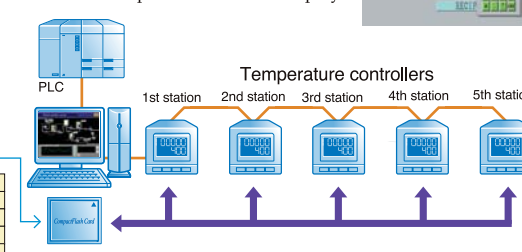
- Monitors numerical data
- Sets the parameters
- Monitors errors by warning lamps and the alarm display



#### Batch memory setting for all temperature controllers

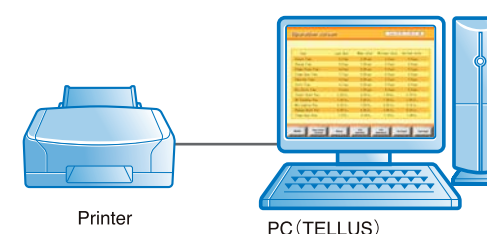
- Saves the recipe data (e.g. die change) on CF card
- Batch setting of all data
- Batch reading of all data

1st station	160	1st station	180
2nd station	250	2nd station	240
3rd station	200	3rd station	190
4th station	30	4th station	35
5th station	45	5th station	40



### POINT 6 Connection with PC peripheral equipment

You can connect peripheral equipment such as Windows compatible printers, and print production data whenever you need it. A large storage media and memory can also be used.



# TELLUS and V-Server contributes to labor saving and prompt troubleshooting

### Example 1

#### Remote monitoring of unmanned sewage treatment plant

By providing Monitouch on a broadband connection such as ADSL or optical communication at an unmanned sewage treatment plant, the conditions of the plant can be monitored on a PC equipped with TELLUS and V-Server in a remote maintenance office.

Benefits

- No need to go to the plant for adjustment and maintainance
- Any problems can be notified in real-time by e-mail function

### Example 2

#### Centralized control of production processes

By connecting with Monitouch for every manufacturing process via Ethernet, your office PC equipped with TELLUS and V-Server can monitor and control all production processes.

Benefits

- No need to go to the plant for operation or monitoring
- Error detection and troubleshooting are possible even from the office

●Compatible V series models		●System requirements	
V715/V7i series		OS	Windows 98/Me/NT Ver.4.0/2000/ XP (Windows XP is recommended.)
V7 series and CU-03-2 (Ethernet unit)		Memory (RAM)	32 MB or more
V706 and DU-01		Hard disk	TELLUS: 30 MB or more, V-Server: 50 MB or more
V612/V610/V606i and CU-03-2 (Ethernet unit)			

Before using TELLUS and V-Server	
TELLUS and V-Server programs for trial or upgrading can be downloaded from our website.	
You need a license to run TELLUS and V-Server. Be sure to complete the license validation procedure, after which you will be issued a password. During the trial period until you receive your password, you may use TELLUS and V-Server on a limited basis as follows.	
<div> <div>[Restrictions]</div> <ul style="list-style-type: none"> <li>This software completes operations with an alarm message after one hour of operation.</li> <li>TELLUS Remote mode can be used 100 times only. There is no restriction for the number of starting TELLUS in Emulation mode, HMI mode, or for V-Server.</li> </ul> </div>	
License validation	
License validation is restricted to one license per computer. There are four types of license, one for each function (See below.) Check the type of license for the function(s) you wish to use it for.	
<div> <div>[Notes]</div> <ul style="list-style-type: none"> <li>When reinstalling the application software on the same computer, the same password is valid.</li> <li>If you initialize OS or change the computer on which the application software is installed, the password becomes invalid. In this case, you must go through the license validation procedure again to get a new password.</li> <li>Contact our sales section for further information.</li> </ul> </div>	

<h4>TELLUS-HMI</h4> <ul style="list-style-type: none"> <li>A PC (or Industrial PC) connected with a PLC functions as a V series panel.</li> </ul>	<h4>TELLUS-Remote</h4> <ul style="list-style-type: none"> <li>A client PC equipped with TELLUS accesses V-Server on a server PC via Ethernet and operates the panels of V series (or TELLUS-HMI).</li> <li>HMI communication is also possible.</li> </ul>
<h4>V-Server</h4> <p>The functions of V-Server are conducted by server PC.</p> <ul style="list-style-type: none"> <li>Readout/ Writing of the recipe data of V series (or TELLUS-HMI)</li> <li>Alarm monitoring</li> <li>Event action</li> <li>Screen data transfer etc.</li> </ul>	<h4>TELLUS &amp; V-Server</h4> <ul style="list-style-type: none"> <li>A server PC equipped with TELLUS and V-Server can remotely control the panels of V series (or TELLUS-HMI) while conducting V-Server functions.</li> <li>HMI communication is also possible.</li> </ul>